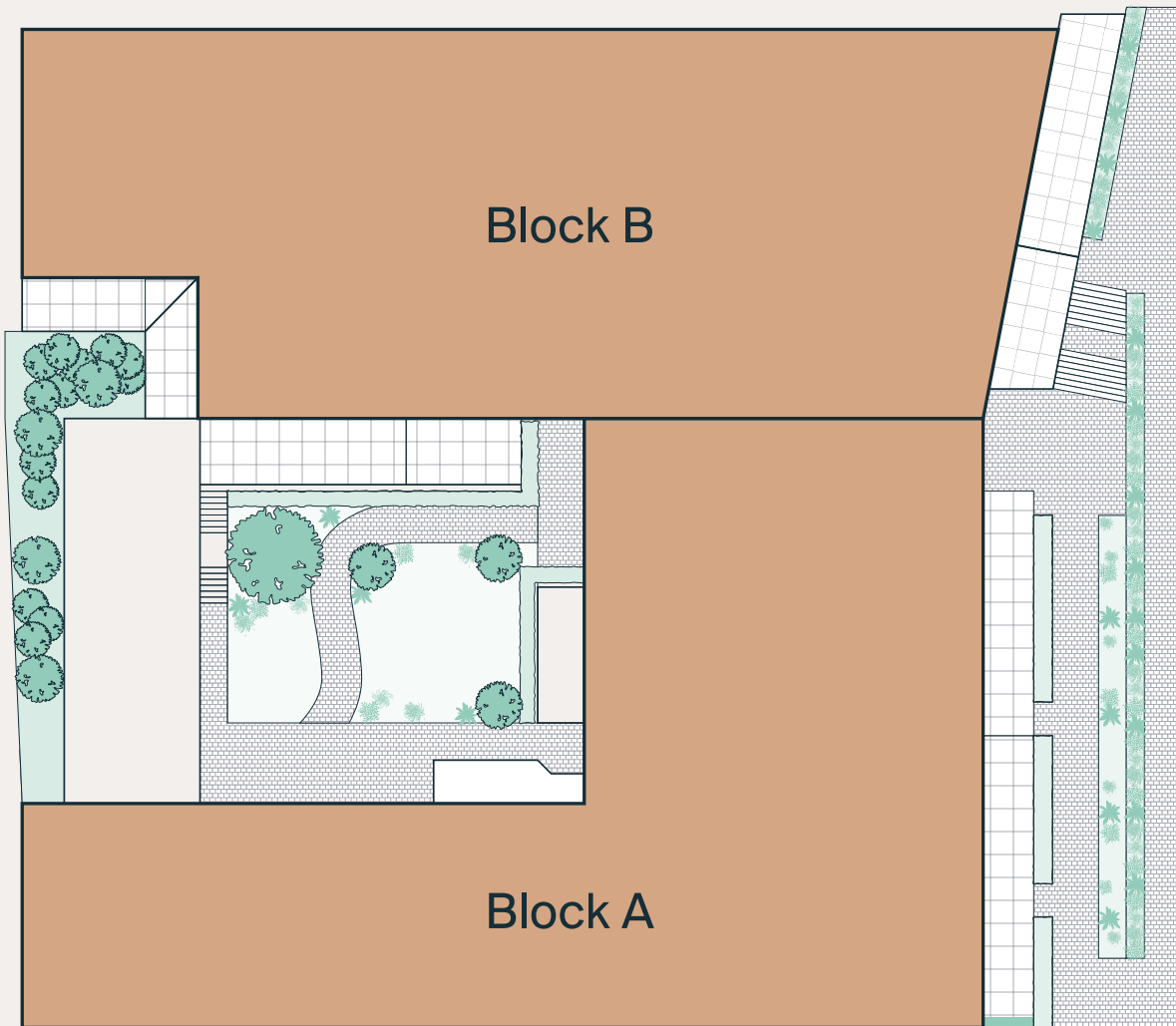


Siteplan

LIMEHOUSE CUT



Block A

Block B

DOD STREET





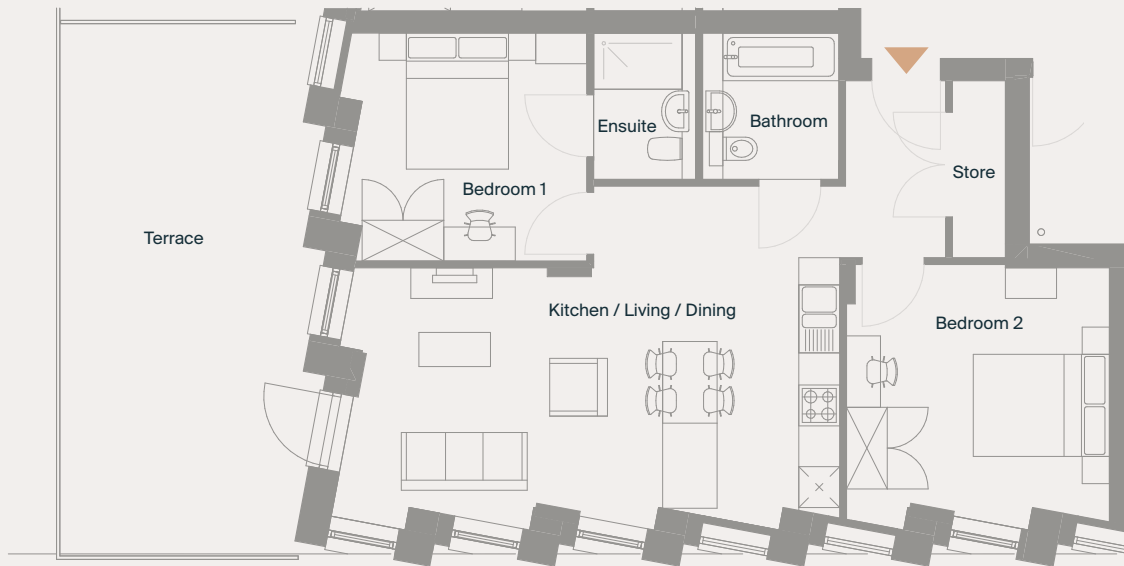
The Penthouses

Two Bedroom

Total Area
72.8 sq m / 783.6 sq ft

Apartment: B.07.01

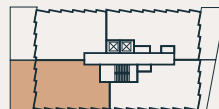
Seventh Floor



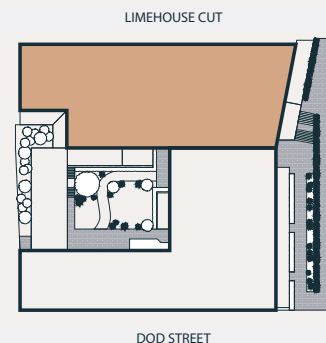
Room Dimensions

Kitchen / Living / Dining	9.0m x 6.6m
Bedroom 1	3.9m x 3.9m
Bedroom 2	4.0m x 3.9m
Terrace	29.1 sq m

Plot Locator



Siteplan



All measurements are approximate and are taken at maximum widths and lengths of rooms.

Plans are drawn to scale at a design phase and may vary during build. Kitchens and wardrobes sizes and layouts may differ to those shown.

Furniture layouts are indicative only (where they appear). All total sqft and sqm are gross measurements. Window styles and positions may vary. Floorplans are not to scale.



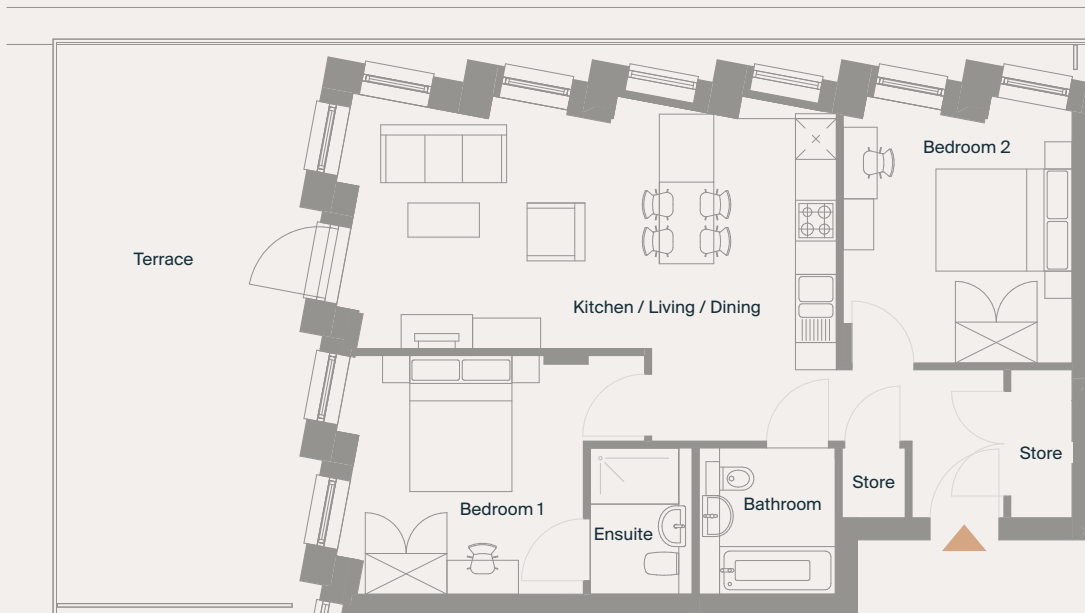
The Penthouses

Two Bedroom

Total Area
72.4 sq m / 779.2 sq ft

Apartment: B.07.02

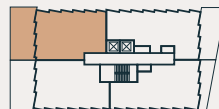
Seventh Floor



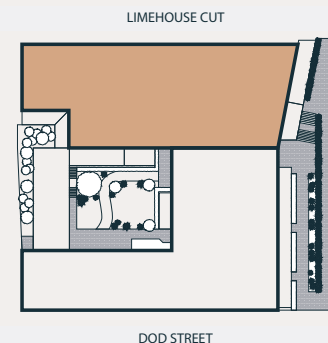
Room Dimensions

Kitchen / Living / Dining	9.8m x 6.2m
Bedroom 1	4.5m x 4.2m
Bedroom 2	3.9m x 3.4m
Terrace	31.3 sq m

Plot Locator



Siteplan



All measurements are approximate and are taken at maximum widths and lengths of rooms.

Plans are drawn to scale at a design phase and may vary during build. Kitchens and wardrobes sizes and layouts may differ to those shown.

Furniture layouts are indicative only (where they appear). All total sqft and sqm are gross measurements. Window styles and positions may vary. Floorplans are not to scale.



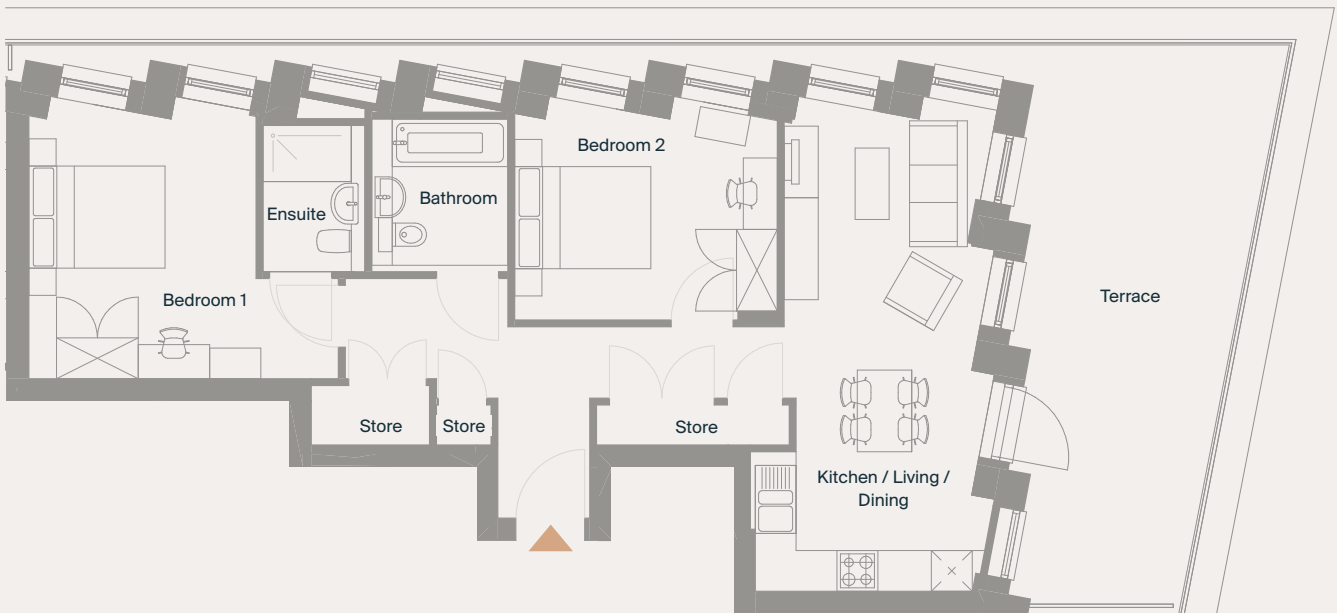
The Penthouses

Two Bedroom

Total Area
74.3 sq m / 800.0 sq ft

Apartment: B.07.03

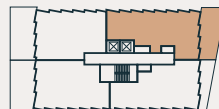
Seventh Floor



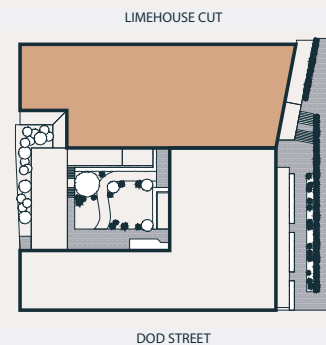
Room Dimensions

Kitchen / Living / Dining	9.8m x 7.3m
Bedroom 1	4.3m x 4.1m
Bedroom 2	4.4m x 3.7m
Terrace	26.3 sq m

Plot Locator



Siteplan



All measurements are approximate and are taken at maximum widths and lengths of rooms.

Plans are drawn to scale at a design phase and may vary during build. Kitchens and wardrobes sizes and layouts may differ to those shown.

Furniture layouts are indicative only (where they appear). All total sqft and sqm are gross measurements. Window styles and positions may vary. Floorplans are not to scale.



The Penthouses

Two Bedroom

Total Area
68.4 sq m / 736 sq ft

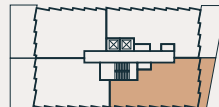
Apartment: B.07.04
Seventh Floor



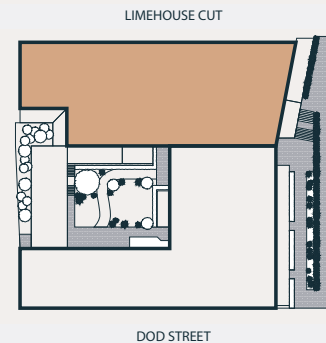
Room Dimensions

Kitchen / Living / Dining	9.4m x 6.6m
Bedroom 1	4.2m x 3.9m
Bedroom 2	3.9m x 3.7m
Terrace	13.1 sq m

Plot Locator



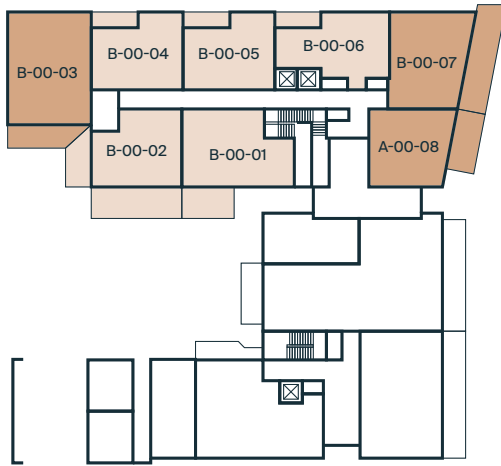
Siteplan



All measurements are approximate and are taken at maximum widths and lengths of rooms. Plans are drawn to scale at a design phase and may vary during build. Kitchens and wardrobes sizes and layouts may differ to those shown. Furniture layouts are indicative only (where they appear). All total sqft and sqm are gross measurements. Window styles and positions may vary. Floorplans are not to scale.

Apartments

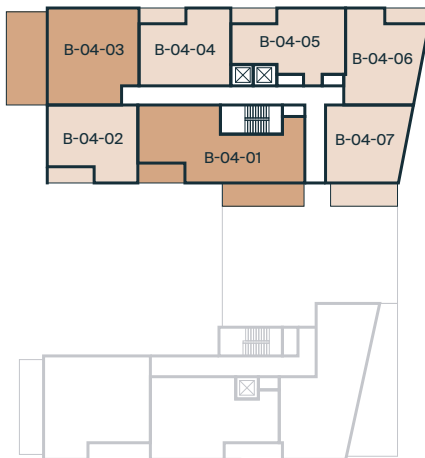
Floor 00



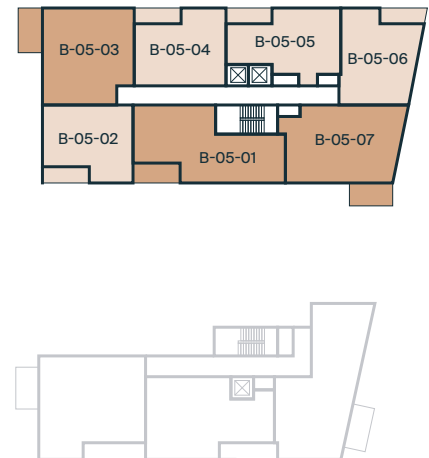
Floor 01



Floor 04



Floor 05



Disclaimer: All details contained within this sales information are correct at the time of production. However, in the interest of continuous improvement and to meet market conditions the developer reserves the right to modify plans, exteriors, specifications, and products without notice or obligation. Actual usable floor space may vary from the stated floor area. Any CGIs depicted are an artist's concept of the completed building and/or its interiors only. The content contained within these particulars may not be current and can be changed at any time without notice.

** Build-Zone warranty period is from the date the building reaches practical completion For more information visit: (build-zone.com)

Floor 02



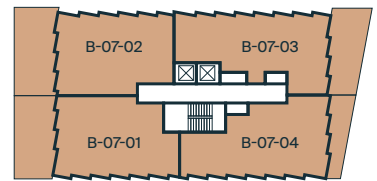
Floor 03



Floor 06



Floor 07



Key

- One Bedroom Apartments
- Two Bedroom Apartments

Siteplan

